

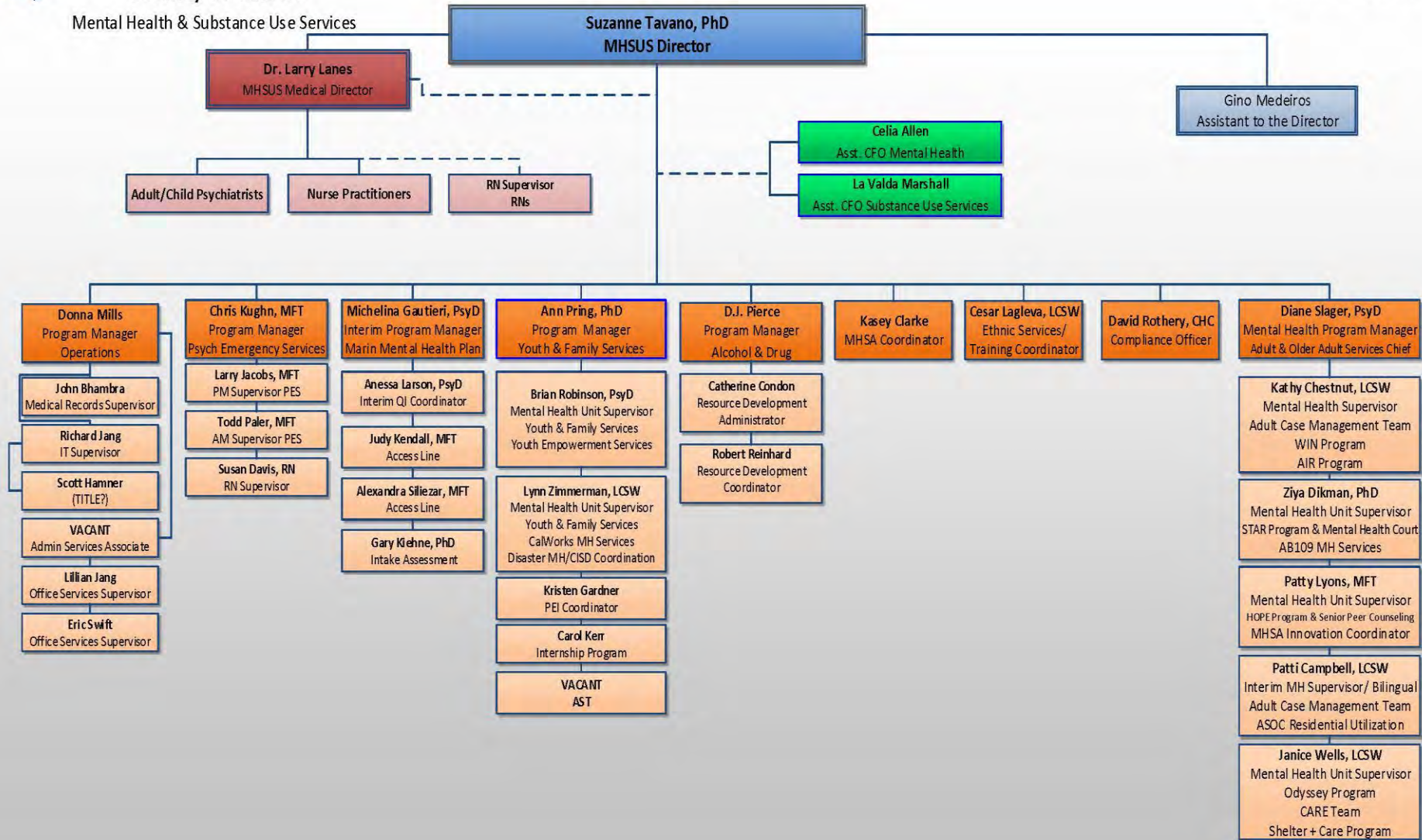
NAMI GENERAL SESSION

Update on Marin County Mental Health Services

Presented by: Suzanne Tavano, Ph.D.
Director of Mental Health and Substance Use Services

Date: April 21, 2014

Mental Health & Substance Use Services



County of Marin Mental Health and Substance Use Services

Adult System of Care

**Mental Health Services
Access Line**
1.888.918.1115

**Recovery Connections Center
Access Line**
(415) 756-2345

PREVENTION SERVICES

Adult / Families MH
Community Action Marin –
Vietnamese Program
(**CM/Canal**: 3270 Kerner Blvd, San
Rafael, 415.457.4554)
Canal Alliance – MH PEI and
Community Health Advocates
(**CM, Canal and NM**: 91 Larkspur St.,
San Rafael, 415.454.2840)
Southern Marin Multi-Disciplinary
Team – Brief Intervention/CM
(**SM**: 441 Drake Avenue, Marin City,
415.339.2937)

Community Coalitions
Novato and Twin Cities
Community Coalitions Policy (NM
and CM)

Older Adult MH
Jewish Family and Children's Services
(**Countywide and In-Home**: 600 5th
Ave., San Rafael, 415.491.7800)

Primary Prevention Services
Prevention Coordinator - 415-473-4230
*Novato Community Coalition
*Larkspur/Corte Madera Coalition
Media Advocacy – O'Rourke, Inc.
Youth Coalition – Youth Leadership
Institute
Prescription Drug Initiative - HHS

Adult/Families MH
Marin Community Clinics
(415) 448.1500

Coastal Health Alliance
(415) 888.0124

Marin City Health & Wellness Center
(415) 339-8813

Ritter Center
(415) 457.8182

TREATMENT SERVICES

**COUNTY MEDICATION &
OUTPATIENT CLINICS**
250 Bon Air Rd, Greenbrae
3270 Kerner Blvd, San Rafael
10 N San Pedro Rd, San Rafael

**ADULT CASE
MANAGEMENT SERVICES**
3270 Kerner Blvd, San Rafael

**MARIN COMMUNITY CLINICS-MENTAL
HEALTH INTEGRATED PHYSICAL
HEALTH CARE CLINIC**
250 Bon Air Rd, Greenbrae

HOPE PROGRAM
10 N San Pedro Rd, San Rafael

**Outreach and Engagement
Senior Peer Counseling**
10 N San Pedro Rd, San Rafael
Older Adult

Contractor Provider Network
(7) Organizational Providers
(8) Individual Providers

Engagement Groups.
Recovery Connections Center
103 Shoreline Parkway, San Rafael

General Outpatient AOD Treatment
Telephone: 415-457-3755
Agency: Marin Treatment Center
Location: 1466 Lincoln Avenue, San
Rafael

Medication Assisted Treatment
Agency: Marin Treatment Center
Location: 1466 Lincoln
Avenue, San Rafael
Telephone: 415-457-3755
Services: Methadone Maintenance

TREATMENT SERVICES (cont.)

AIR TEAM
3270 Kerner Blvd
San Rafael, CA

CARE TEAM
Outreach Engagement

ODYSSEY PROGRAM
250 Bon Air Rd, Greenbrae

RESIDENTIAL CARE & HOUSING

Residential AOD Treatment
Center Point
415-456-6855
Men; Women; Women with Children
San Rafael, CA 94901

CONTRACTED BOARD & CARE
St. Michael's, St. Anne's, All Saints, Golden Home,
Providence Place, Creekswood Senior Home,
Parfitt Rest Homes, Willow Glen Care Center,
Davis Guest Home

RESIDENTIAL SUPPORT SERVICES
D Street House, Novato House, Avanti House,
Draper House

**SHORT-TERM HOUSING
VOYAGER PROGRAM**

**ASSISTED INDEPENDENT LIVING
CARNEL HOTEL PROGRAM
MIL PROGRAM
SHELTER PLUS CARE PROGRAM**

LONG-TERM CARE PROVIDERS (LOCKED)
California State Hospitals, California Psychiatric
Transitions, Creekside, Creekswood, Canyon
Manor, Idylwood, American River, County Villa
Merced Behavioral Health Center

FORENSICS

Independent Contractors
Criminal Justice Coordinator
415-473-8408
Jim Ricci
Recovery Coach (AB 109/SB 678)
Neil Miller
Recovery Coach (AB 109/SB 678)
Tom Radovanovich
Recovery Coach (ADC)
Teena Scovis, Ph. D.
Assessment/Therapy (ADC)

In-Custody Services – Marin County Jail
Agency/Services: **BACR** (415-507-4137) -
Assessment, Seeking Safety Groups,
Thinking for a Change Groups, Anger
Management Groups
Agency/Services: **MTC** (415-457-3755) –
Methadone Maintenance

Jail Mental Health Services
Services: Consultation, crisis intervention,
psychiatric medications, discharge planning,
court evaluations.
Location: 13 Peter Behr Drive, San Rafael

**CIT Law Enforcement Officers
Jail Mental Health**
Adult & Older Adult

STAR PROGRAM & MH COURT
250 Bon Air Rd, Greenbrae

CRISIS CONTINUUM

**PSYCHIATRIC
EMERGENCY
SERVICES**
250 Bon Air Road,
Greenbrae

**ACUTE CARE
HOSPITALS**
Marin General
S.F. General
St. Francis
St. Helena
Sutter Center
John Muir
Mills Peninsula
Woodland
Memorial

**CRISIS
RESIDENTIAL**
(Opening Winter
2013-14)

Crisis Planning
Community Action
Marin
(**CM and
Countywide**: 3270
Kerner Blvd, San
Rafael,
415.457.4554)

**The Vine
Detoxification**
301 Smith Ranch
Road, San Rafael

RECOVERY

Ancillary Services
HIV/Hep C Testing – Marin Treatment
Center
(1486 Lincoln Ave., San Rafael – 415-
457-3755)

Sober Living (AB 109) – Marin
Services for Men
(424 Mission Ave., San Rafael – 415-
495-6736)

***Thinking for a Change** – San Rafael
(AB 109) – BACR
103 Shoreline Pkwy., San Rafael- 415-
507-4137

***Thinking for a Change** – Novato (AB
109) – BACR
1767 Grant Ave, Novato – 415-507-
4137

***Thinking for a Change** – Marin City
(AB 109) – PDCE
850 Drake Ave., Marin City – 415-740-

**FAMILY SUPPORT SERVICES
ADULT FAMILY PARTNERSHIP
PROGRAM**
3270 Kerner Blvd, San Rafael
**THURSDAY FAMILY SUPPORT
MEETINGS** 250 Bon Air Rd, Greenbrae
Population Served - Adult & Older Adult

**PEER MENTAL HEALTH PROGRAM
ENTERPRISE RESOURCE CENTER**
3270 Kerner Blvd, San Rafael
Population Served - Adult & Older Adult
Services
Drop-In Center/Activities Program
Warm Line, Peer Companion Program
Peer Mental Health Provider Program

County of Marin Mental Health and Substance Use Services Children's System of Care

**Mental Health Services
Access Line**
1.888.818.1115

**Recovery Connections Center
Access Line**
(415) 755-2345

PREVENTION EARLY INTERVENTION

Marin County Office of Education –
Triple P
(Countywide)

Community Action Marin
Across Ages
(SM, MLK Academy, 200 Phillips Dr.,
Marin City 415.332.3573)

Jewish Family and Children's Services
Early Childhood Mental Health
(Countywide: 18 subsidized preschools)

Family Service Agency
Teen Screen (Countywide): Novato, San
Rafael and Tamalpais High Schools,
415.491.5700)

Huckleberry Youth Programs
TAY (CM): 381 Third Ave., San Rafael,
415.258.4944)

Novato Youth Programs
TAY (NM): 680 Wilson Ave., Novato,
415.892.1643)

Screening and Assessment
Recovery Connections Center (BACR)
Services: Screening, Assessment, Referral
and Engagement Groups.
Locations: San Rafael - HHS Campus (3240
Kerner), Juvenile Probation (4 Jeanette
Frandi Way) and CalWORKs (120 N.
Redwood)
Telephone: 415-755-2345
Populations Served: All

Primary Prevention Services
Prevention Coordinator – 415-473-4230
*San Rafael Coalition – San Rafael Police
Dept.
*Novato Community Coalition
*Larkspur/Corte Madera Coalition
Media Advocacy – O'Rourke, Inc.
Youth Coalition – Youth Leadership
Institute
Prescription Drug Initiative – HHS

SCHOOL BASED SERVICES Clinician on site 4-20 hr/wk

Outpatient - child & family
Bahia Vista Elementary
Coleman Elementary
Davidson Middle School
Novato High School
San Rafael High School
Short Elementary
Terra Linda High School
Venetia Valley
Elementary / Middle School

TREATMENT SERVICES

Second Step *
(D.V. transitional housing) Services
Groups:
Mothers
Children
Screening/Referrals

Youth Empowerment Services:
Juvenile Probation Services (thru 18 years)
Outpatient
Medication
Wraparound

TAY Buckleup Services
980 Lincoln, San Rafael
rSP for 16-25 years old
Case management
Outpatient services
Medication
Job Coaching
School support

CalWORKS Services
Assessment
Brief Intervention
Referral
Intensive Case Management
Medication

West Marin Clinic
Outpatient Services - Children, Youth & Adult
Medication

Seneca Wraparound
Collaboration with Social Services, MCDE, Juvenile
Justice
Services: Wraparound, in home, mentoring,
"whatever it takes")

TREATMENT SERVICES (continued)

Contractors
Latino Family Health - Com. Health Advocates
Across Ages - mentoring @ MLK *

General Outpatient Treatment
Agency: Huckleberry Youth Programs
Services: Individual, Group and Family Counseling;
Pro-Social Support
Location: 361 3rd Street, Suite G, San Rafael
Telephone: 415-258-4944
Populations Served: 12-25 years of age

Intensive Outpatient Treatment
Agency: Bay Area Community Resources
Services: Individual, Group and Family
Counseling, Case Management,
Pro-Social Support
Location: 103 Shoreline Parkway,
San Rafael
Telephone: 415-755-2319
Populations Served: Juvenile Drug Court and
Probation-referred adolescents (14-18 years
of age)

Youth & Family Services
3230 Kerner, San Rafael
473-6724
Outpatient
Medication
Wraparound
Peer-Based Parent Support
Parenting Classes
Youth Mentoring

Contractor Provider Network
(?) Organizational Providers
(?) Individual Providers

Family Partnership Program
Peer Support for Parents
3230 Kerner Blvd, San Rafael

CRISIS CONTINUUM

PSYCHIATRIC EMERGENCY SERVICES
250 Bon Air Rd, Greenbrae

ACUTE CARE HOSPITALS
St. Mary
St. Helena
John Muir

Expanded Mental Health Benefits

- ❖ Medi-Cal managed care plans shall provide the expanded mental health benefits for mild to moderate conditions.

- ❖ Expanded mental health benefits include:
 - Individual and group mental health evaluation and treatment (psychotherapy).
 - Psychological testing when clinically indicated to evaluate a mental health condition.
 - Outpatient services for the purposes of monitoring drug therapy.
 - Outpatient laboratory, drugs, supplies and supplements.
 - Psychiatric consultation.

Expanded SUD Benefits

- ❖ Expanded SUD benefits include:
 - Intensive outpatient treatment (no longer limited to pregnant/postpartum/under 21 population).
 - Residentially-based substance use disorder services (no longer limited to pregnant/postpartum population).
 - Medically necessary inpatient detoxification.
- ❖ Continuing SUD Benefit
 - Drug free outpatient group therapy.
- ❖ Optional SUD Benefit
 - Voluntary Inpatient Detoxification.
- ❖ County provides all benefits.

Affordable Care Act Implementation

MENTAL HEALTH SERVICES

MHSUS Provides:

(Serious Conditions)

Outpatient Services

- Mental Health Services (assessments plan development, therapy, rehabilitation, and collateral)
- Medical Support
- Day Treatment Services and Day Rehabilitation
- Crisis Intervention and Crises Stabilization
- Targeted Case Management
- Therapeutic Behavior Services

Residential Services

- Adult Residential Treatment Services
- Crisis Residential Treatment Services

Inpatient Service

- Acute Psychiatric Inpatient Hospital Services
- Psychiatric Inpatient Hospital Professional Services
- Psychiatric Health Facility services

MENTAL HEALTH SERVICES

Partnership/Beacon Provides:

(Mild to Moderate Conditions)

Outpatient Services

- Individual/group mental health evaluation and treatment (psychotherapy)
- Psychological testing when clinically indicated to evaluate a mental health condition
- Outpatient services for the purposes of monitoring medication treatment
- Psychiatric consultation
- Outpatient laboratory, medications supplies, and supplements

SUBSTANCE USE SERVICES

MHSUS Provides

Outpatient Drug Free

- Intensive Outpatient (newly expanded to additional populations)
- Residential Services (newly expanded to additional populations)
- Narcotic Treatment Program
- Naltrexone

New Services

- Inpatient Detoxification Services
- (Administrative linkage to County AOD still being discussed)

PARTNERSHIP PROVIDES:

- Alcohol Screening
- Alcohol Brief Intervention
- Alcohol Referral

Management of Expanded Mental Health Benefits

- ❖ Partnership Health contracts with Beacon Health Strategies for contracting and credentialing of providers for new benefits, authorization of services, and reimbursement of providers.
- ❖ Expanded mental health benefits are provided in Federally Qualified Health Centers and by individual and non-profit community providers.

Coordination of Mental Health Benefits

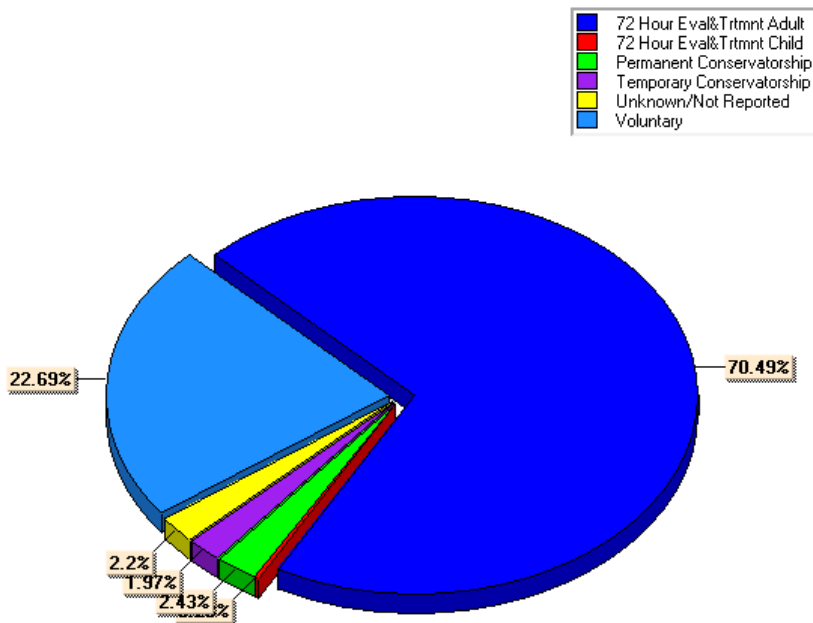
- ❖ The Marin Mental Health Plan, known as Mental Health and Substance Use Services (MHSUS), provides specialty Mental Health Services to persons with serious need.
- ❖ Partnership Health provides non-specialty mental health services to person with mild to moderate need.
- ❖ Referral between MHSUS and Partnership Health is bi-directional.

Management of Medi-Cal Substance Use Services

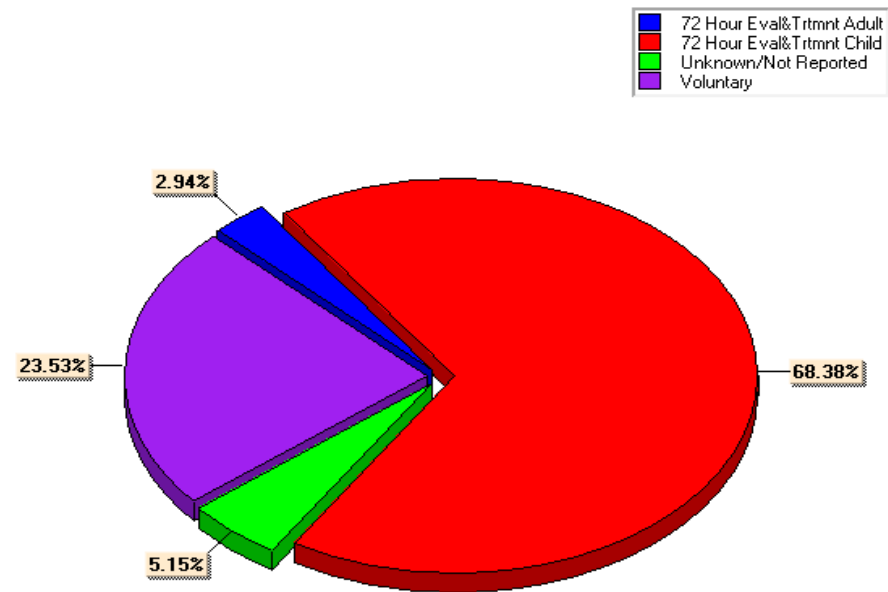
- ❖ Partnership, through contracted primary care providers, provides screening for alcohol misuse, brief intervention, and referral to drug Medi-Cal Services.
- ❖ MHSUS provides Drug Medi-Cal Substance Use Services, except for Optional Inpatient Detoxification, which is covered by the State Medi-Cal Fee for Service system.

Legal Status at Admission to PES

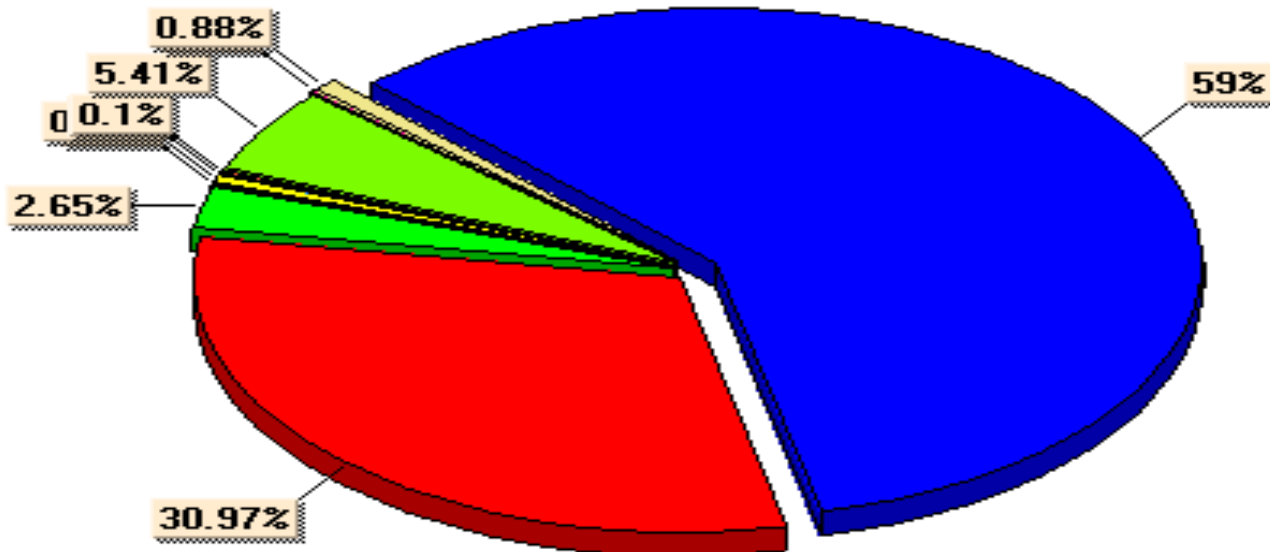
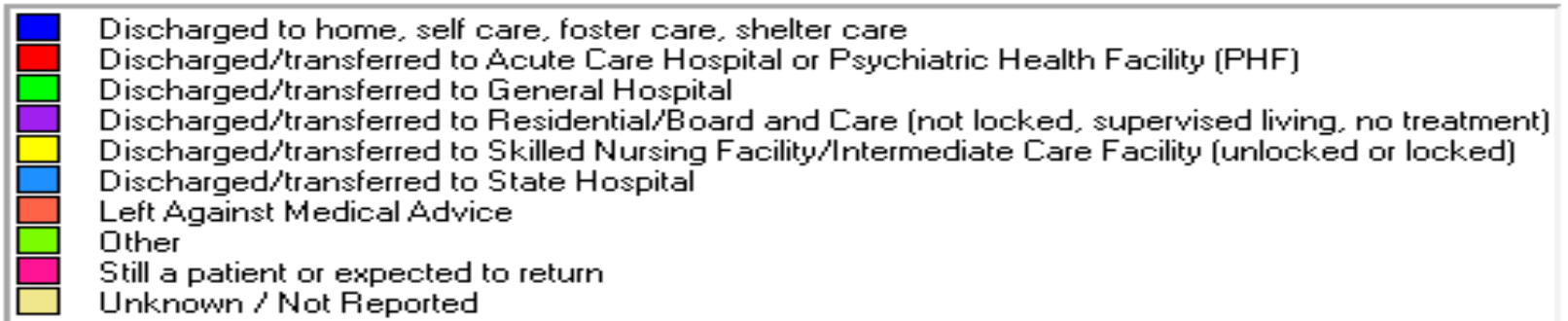
Legal Status of Adults at Admission



Legal Status of Adolescents at Admission



Discharge Status for all admissions



The Odyssey Program

- ❖ Serves adults, transition age young adults and older adults with serious mental illness, ages 18 and older, who are homeless or at-risk of homelessness.
- ❖ Provides comprehensive assessment, individualized client-centered service planning, crisis management, therapy services, peer counseling and support, psycho-education, employment services, assistance with money management, psychiatric medication, medical case management, health screenings and disease prevention services, treatment for co-occurring substance abuse disorders, employment assistance and linkages to supportive housing.

Helping older People Excel (HOPE) Program

- ❖ Serves older adults with serious mental illness, ages 60 and older experiencing a reduction in personal or community functioning.
- ❖ Multi-disciplinary assertive community treatment team.
- ❖ Provides comprehensive assessment, individualized client-centered service planning, crisis management, therapy services, peer counseling and support, psycho-education, assistance with money management, linkages to treatment for co-occurring substance abuse disorders, and linkages to/provision of all needed services and supports.

The Support and Treatment after Release (STAR) program

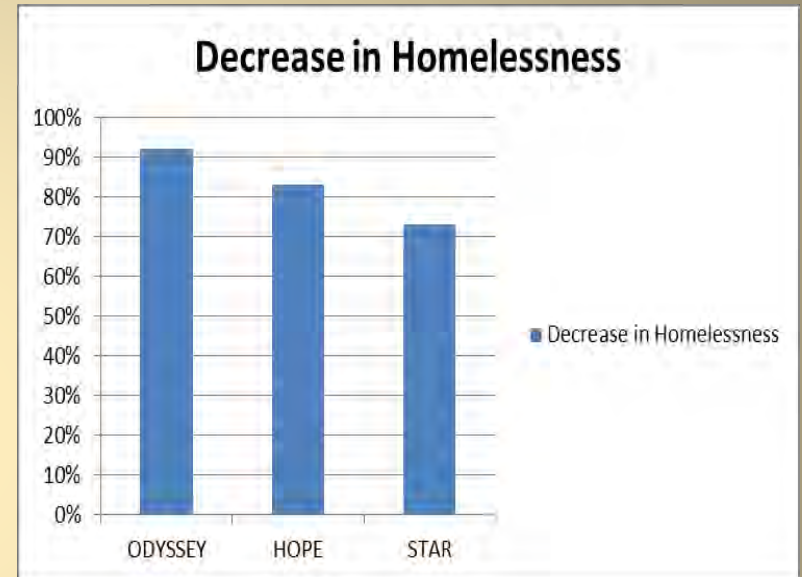
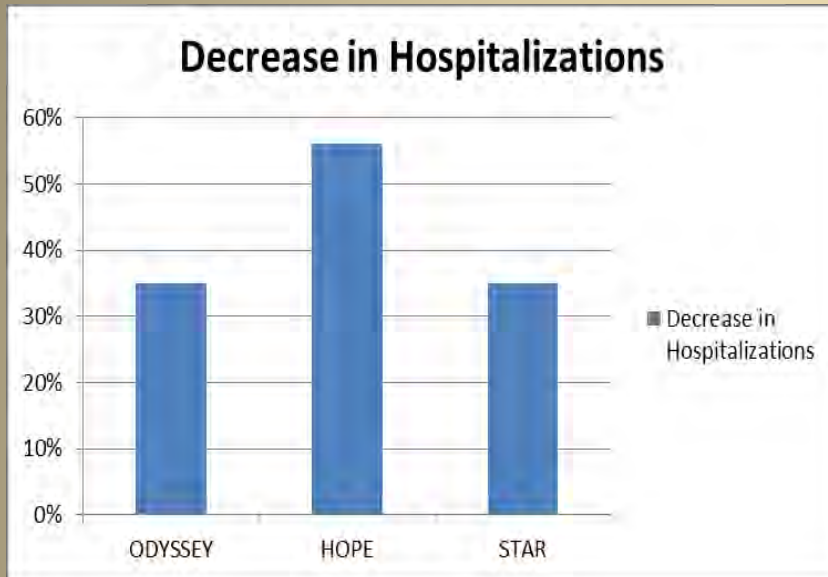
- ❖ Serves adults with serious mental illness who are at-risk of incarceration or re-incarceration.
- ❖ Operates in conjunction with Marin's Jail Mental Health Team and the STAR Court (mental health court).
- ❖ Multi-disciplinary, multi-agency assertive community treatment team comprised of professional and peer specialist staff provides comprehensive assessment, individualized client centered service planning, crisis management, therapy services, peer counseling and support, psycho-education, employment services and linkages to/provision of all needed services and supports.

People Served by Full Service Partnerships

From July 1, 2012 to June 30th, 2013 there were 191 adult partners served by Marin County Full Service Partnerships (FSP). Since their inceptions through June 30, 2013 the FSPs have served 557 adults.

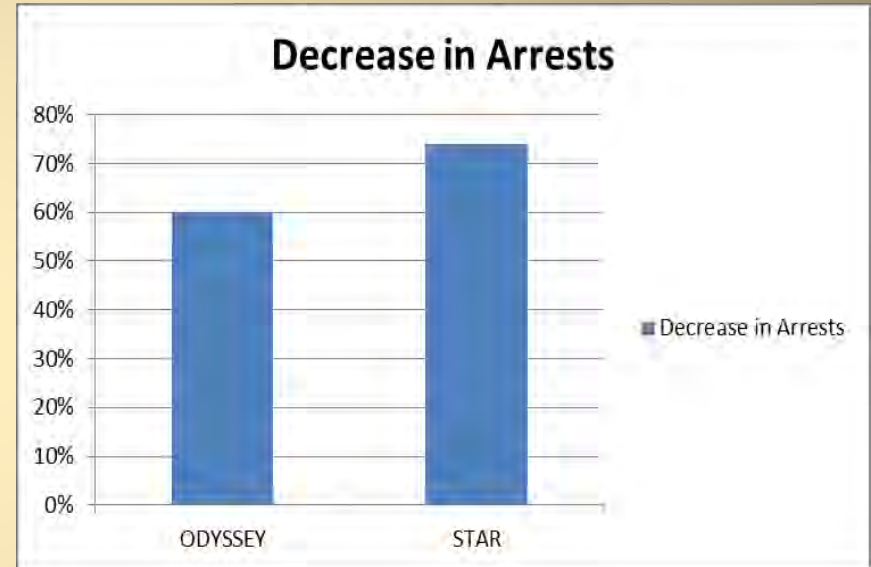
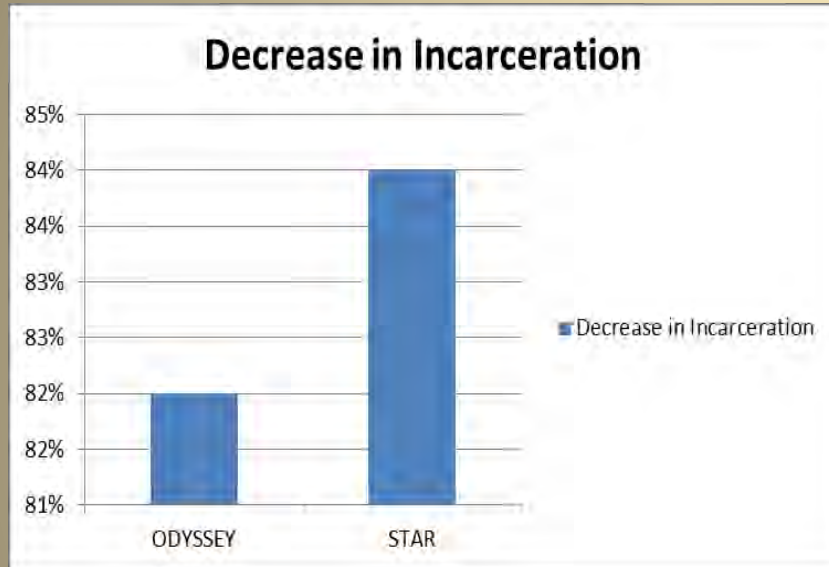
	Goal FY12-13	Cumulative	FY12-13
ODYSSEY	60	223	74
HOPE	40	145	59
STAR	40	189	58
TOTAL	140	557	191

FSP Performance Measures: Hospitalization and Homelessness



In FY 2012-13 partners in receiving services from our FSPs reduced the days they were homeless and psychiatric hospitalized. Odyssey and STAR partners also decreased the number of times they were arrested and days they spent in Jail.

FSP Performance Measures: Incarceration and Arrests



Improvement in Quality of life and Reduction in Costs

- ❖ In fiscal year 12-13 FSP partners spent 335 fewer days in psychiatric hospitals than they had in the year prior to receiving services. At \$1200 per day those 335 would have cost of \$402,000 dollars.
- ❖ Partners also spent 4130 fewer days in jail. In 2013 it costs \$145 dollars per day to house someone in Marin County Jail not including mental health medications or medical expenses. This results in a cost savings of \$598,850.
- ❖ In total the decreases in services to our partners resulted in a cost differential of at least \$1,100,850.

Analysis of Costs Reductions

Cost difference resulting from reduced days in jail for Partners

FSP	Decrease in Jail Days	Cost per Day, not including Medical Expenses	Savings
Odyssey	191	\$145	\$27,695
STAR	3939	\$145	\$571,155
Total	4130		\$598,850

Cost difference resulting from reduced hospitalizations for Partners

FSP	Decrease in days in Psychiatric Hospitals	Cost per Day	Savings
Odyssey	81	\$1200	\$97,200
HOPE	182	\$1200	\$218,400
STAR	72	\$1200	\$86,400
Total	335		\$402,000

Cost difference resulting from reduced hospitalizations and days in jail for Partners

Service	Difference in Days spent in service	Cost per day	Savings
Jail	4130	\$145	\$598,850
Psychiatric Hospital	335	\$1200	\$402,000
Total			\$1,100,850

New Program: Intensive Outreach Services

- ❖ Full time mental health practitioner & full-time peer specialist.
- ❖ Program component targeting adults who are at imminent risk because of their inability and/or unwillingness to engage in services.
- ❖ Serve 10-15 individuals through assertive outreach.
- ❖ Engage clients voluntarily in treatment and support family members.

Expand Capacity: Services for Co-Occurring Conditions

- ❖ Intensive & integrated outreach, engagement and early intervention services for persons with complex needs (mental health and substance use).
- ❖ Full-time mental health practitioner, full-time substance use counselor & full-time peer specialist to adults.
- ❖ Treat co-occurring mental health and substance use disorders previously untreated or under-treated.

Expanded Capacity: Peer Operated Wellness Center

- ❖ Develop, staff & operate a new wellness and recovery program.
- ❖ Serve individuals transitioning from intensive case management services.

Expanded Capacity: Helping Older People Excel (HOPE)

- ❖ Expand HOPE Program's Intensive Community Treatment component adding a full-time bilingual mental health practitioner.
- ❖ Serve an additional 10 clients.
- ❖ Increase engagement with Hispanic/Latino older adults who are currently underserved in HOPE program.

New Service: Odyssey Step Down Program

- ❖ Add full-time support service worker and full-time peer specialist.
- ❖ Implement a program component targeting individuals transitioning from intensive case management services and supports.
- ❖ Hire individuals with lived experience as a mental health consumer & experience working as a peer specialist.

New: Crisis Triage Team

- ❖ Licensed Mental Health Practitioner, Peer Provider and Family Partner.
- ❖ Assigned to work with the Housing Authority, services to homeless population, and children/families.
- ❖ Navigate mental health and substance use services system.
- ❖ Link to services before crisis.

New: Mobile Crisis Response Team

- ❖ Two teams with licensed clinician and peer provider on each team.
- ❖ Respond to crisis situations in community.
- ❖ Arrange appropriate interventions and treatment.
- ❖ Designated to initiate applications for evaluation pursuant to 5150 WIC.